



REFRIGERATED COUNTERTOP DISPLAY



USER MANUAL

READ THIS USER MANUAL PROPERLY BEFORE USING THIS PRODUCT





ENGLISH

Introduction

Thank you for purchasing this Maxima product. To ensure optimal and safe use, please read these instructions completely before attempting to install or use this product

All Maxima products are manufactured with great care and are CE certified. As a result, our products meet the legal requirements within the European Union with regard to safety, health and the environment. In addition, our products are tested and inspected prior to shipment to ensure product quality and safety.

At Maxima we are very proud of our products and are completely committed to providing you with the best products and service possible. Your satisfaction is our number one priority.

We trust you will enjoy using this product and Thank You for choosing Maxima Kitchen Equipment as your supplier. We hope you will consider Maxima for your future purchases.



ENGLISH

Specifications

Model	Voltage	Power	Temperature Range	GN Container Capacity	Dimensions (mm)	Weight (kg)
09400317	220~240V 50Hz	200W	2~10°C	3 x 1/3 GN	H435 x W955 x D395	22
09400320	220~240V 50Hz	200W	2~10°C	4 x 1/3 GN	H435 x W1200 x D395	25
09400323	220~240V 50Hz	200W	2~10°C	6 x 1/3 GN	H435 x W1400 x D395	29
09400326	220~240V 50Hz	200W	2~10°C	6 x 1/3 GN	H435 x W1500 x D395	31
09400329	220~240V 50Hz	200W	2~10°C	7 x 1/3 GN	H435 x W1600 x D395	32
09400332	220~240V 50Hz	200W	2~10°C	8 x 1/3 GN	H435 x W1800 x D395	34
09400335	220~240V 50Hz	200W	2~10°C	9 x 1/3 GN	H435 x W2000 x D395	36

General Safety Guidelines

This appliance may only be used for the purpose for which it was designed and intended. The manufacturer and supplier are not liable for any damage caused by incorrect operation and improper use.

- This is a commercial product and must only be used by a trained professional who has read and fully understands this manual. It must not be used (without supervision) by children or persons with reduced physical, sensory, or mental capabilities.
- The device is to be used indoors only.
- **WARNING!** Keep the appliance and electrical plug away from water and other liquids. If either is exposed to a liquid, immediately disconnect the power supply and have the appliance checked by a certified technician. Not following these instructions may cause electric shock, or even death.
- Do not use the appliance after it has fallen or is damaged in any other way. Have it checked and repaired by a certified technician.
- Do not move the appliance while operational and never try to move or carry the appliance by the power cord.
- Do not place or move the appliance on its side, upside-down or tilted (more than 45°).
- **ATTENTION!** Do not open the casing or try to repair the appliance yourself (unless instructed). This may void the warranty or cause hazardous situations.
- Do not insert any objects in the casing or openings of the appliance.
- Do not use any extra devices or accessories that are not supplied along with the appliance.
- Never put your hands or other body parts near the moving parts of the appliance while operational.



- Always keep an eye on the appliance when in use.
- Keep all packaging away from children and dispose of packaging in accordance with local, state and national regulations.
- Avoid overloading the appliance.
- The electrical installation must satisfy the applicable local, state and national regulations.
- Switch off the appliance before pulling the power plug out of the socket.
- Always disconnect the power supply when the appliance is not in use. To pull the plug out of the socket, always pull on the plug and not on the cable.
- Do not touch the power plug with wet or damp hands.
- Keep the power cable away from operating range and do not cover the cable. Also make sure the power cable does not come in contact with sharp or hot objects and keep away from open fire.
- **ATTENTION!** If the power plug is in the electrical socket the appliance is connected to the electric grid.

Product Specific Safety Guidelines

- This appliance may only be used for its intended purpose: **To cool, store and display food products.**
- Keep all ventilation openings, in the appliance enclosure and built-in structure, clear of obstruction.
- Use a dedicated power socket, do not use extension cables or socket boxes.
- Do not store flammable or volatile substances inside or near this appliance.
- Open the door using the handle and do not apply excessive force to the glass surfaces.
- Never hang from or climb on top of the appliance.
- Do not store heavy objects on top of the appliance.
- Make sure the shelves are mounted and secured in place properly. Maximum load per shelf: 25 kg.
- Do not switch on the appliance immediately after it was switched off, wait for 5 minutes before switching the appliance back on.



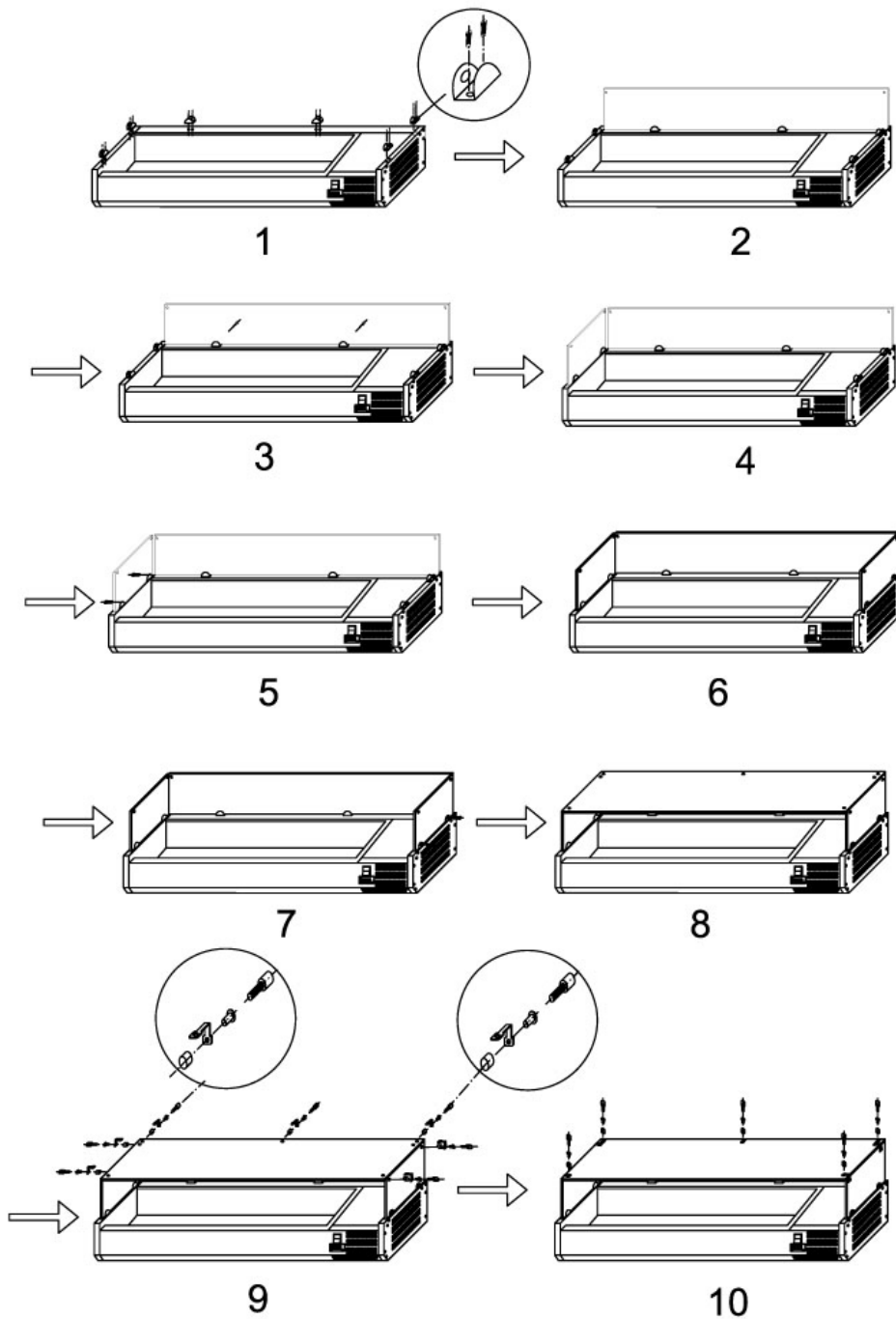
First Time Use

- Unpack and inspect your appliance immediately after receipt. If there are any latent defects or damage to the appliance, then immediately contact your supplier. Save all packaging materials in case the appliance needs to be returned or inspected by the freight carrier.
- Remove any protective film from all surfaces (if applicable).
- Read this instruction manual completely before attempting to install and operate this product. If in doubt, contact your supplier.
- To ensure all coolant and oil in the cooling system has precipitated properly, keep the appliance in the upright position for several hours before switching it on. If the appliance was tilted horizontally prior to or during delivery, keep it upright for at least 8 hours before switching it on.
- If your appliance is supplied with a factory fitted molded plug, then you may plug the unit into a standard electrical outlet. Make sure that the voltage of the appliance and the wall outlet are compatible. If your appliance is not supplied with a factory fitted molded plug, then a qualified electrical engineer must be contracted to wire the unit to the power supply.
- Before using the appliance for the first time, it is recommended to clean the appliance according to instructions (see chapter "*Cleaning and Maintenance*").

Installation

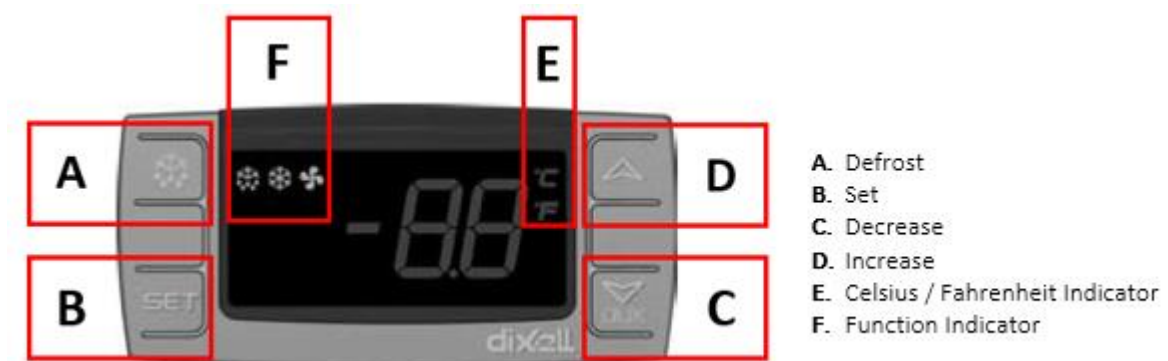
1. The appliance must be positioned level and on a flat and stable surface.
2. Choose a location where the appliance is not exposed to direct sunlight, or close to a direct source of heat such as a cooker, oven or radiator.
3. When positioning the appliance, maintain a distance of 10 cm (4 inches) between the appliance and walls or other objects for ventilation and ease of use.
4. Position the appliance in such a way that the plug is always accessible.
5. Assemble any required parts (if applicable).
6. Plug the power plug into a grounded and compatible socket.

GLASS ASSEMBLY GUIDE



Operation

- Make sure the air vents are free of obstruction.
- The temperature inside should stay between 2 - 10 °C. Adjust the thermostat settings accordingly. The ambient temperature will greatly affect which setting is needed to achieve this temperature range.
- Do not set the thermostat to low either, this may cause ice formation and eventually damage to the appliance.
- Activate the appliance using the “ON/OFF” switch located at the front, next to the digital control panel. The screen on the control panel will display the actual temperature measured.
(A detailed and in depth user manual for the Dixell control panel is available from your supplier)
- Press “SET” key [B] to view the current set temperature value.
- To change the set temperature value, press and hold the “SET” key until the °C/°F indicator [E] starts flashing. Use the arrow keys [C/D] to select the desired temperature value and press “SET” to confirm (or wait 10 seconds). The display value will return to displaying the actual temperature again.
- Enter the programming mode to switch between Celcius (°C) or Fahrenheit (°F) parameters. Press and hold the “SET” and “DECREASE” keys [B+C] simultaneously until the °C/°F indicator [E] starts flashing. Choose the desired parameter and press “SET” to confirm.
- The appliance will auto-defrost on a predetermined interval. To manually activate defrost mode, press and hold the “DEFROST” key [A] until the defrost indicator [F] illuminates.
- When not in use, switch off the appliance by removing the plug from the power socket.
- Clean the appliance according to instructions after use (see chapter “Cleaning and Maintenance”).





Troubleshooting

The follow overview will help you understand possible problems. However, only qualified technicians should attempt to open or repair the appliance. Contact your supplier when in doubt.

Problem	Possible Cause	Possible Solution
The appliance does not work.	<ul style="list-style-type: none">▪ Power supply interrupted.▪ Incorrect electrical input.	<ul style="list-style-type: none">➤ Plug power supply in socket.➤ Use compatible power source.
The appliance does not cool properly.	<ul style="list-style-type: none">▪ Inadequate thermostat settings.▪ Air circulation is obstructed.▪ Obstructed or dirty condenser/fan.▪ Obstructed air inlet or outlet.▪ Ambient temperature too high.	<ul style="list-style-type: none">➤ Adjust settings.➤ Make sure air can freely circulate inside the chamber.➤ Unblock or clean condenser/fan.➤ Unblock the inlet/outlet.➤ Make sure the appliance is placed in a suitable environment.
The appliance makes unusual noise.	<ul style="list-style-type: none">▪ Appliance not level or not all feet touching ground properly.▪ Appliance is in contact with other object.	<ul style="list-style-type: none">➤ Make sure appliance is level and all feet touch the ground firmly.➤ Make sure the appliance stands freely.
There is condensation on the outside of the appliance.	<ul style="list-style-type: none">▪ Temperature difference between inside and outside the cooler.	<ul style="list-style-type: none">➤ Condensation is normal, remove with dry cloth.

Cleaning and Maintenance

- Maintenance and repairs should only be done by a certified technician.
- Regularly check and clean the appliance, its parts and accessories (if applicable).
- Regularly check the power plug and power cable for damage. If either is damaged do not use the appliance. Instead, have it repaired by a certified electrical engineer.
- Always switch off and disconnect the power supply before cleaning or maintenance.
- **ATTENTION!** Never use aggressive cleaning agents or abrasives. Do not use solvents or petrol-based cleaning agents. Some cleaning agents may leave harmful residues or cause damage to the appliance. Use a food safe detergent instead.
- **ATTENTION!** Do not use any scourer and sharp or pointed objects during cleaning, this may cause damage to the appliance.
- **ATTENTION!** Never hose down the appliance or immerse it in water or any other liquid. Also, do not use a steamer to clean the appliance
- **ATTENTION!** Never let the power cable or power plug get wet or damp.
- The condenser should be dust free and cleaned at least every 3 months. Clean using a soft brush and/or vacuum machine. The condenser is located at the back of the appliance and accesible throught the access panel.
- Wipe down the exterior and interior using a damp cloth with a mild detergent. Dry the inside using a soft cloth and keep the door(s) open for a while. This will help to avoid mold and bad smells.



Storage

- Make sure the appliance is cleaned properly before storage.
- Coil up the power cable and put it away.
- Store in a cool and dry place.

Discarding

When discarding the appliance, do so in compliance with local, state and national regulations.

Guarantee

Thank you for using our products, our company will follow related provisions from our "Algemene Voorwaarden", and provide you services when you can show us the invoice.

We provide 12-month warranty from the date of purchase (invoice date). In the warranty period, our company is responsible for free parts if there is a device fault or quality problem of spare parts under correct operation.

The following is not included in the free service:

1. Damages result from transportation, installation, improper connections.
2. Component damages caused by failing to provide power and voltage as required in technical data.
3. Damages caused by disassembling products, adjust or change the mechanical and electrical structures without permission.
4. Damage caused by improper operation, cleaning and maintenance.
5. Non-man-made damage, such as damages from abnormal voltage, fire, building collapse, lightning, floods and other natural disasters, and damages from rats and other pests.
6. Failure in following the manual when operating.
7. Wearable and expendable parts.
8. Altered invoice or without invoice.

In line with our policy of continuous development, we reserve the right to alter the product, the packaging or the documentation without prior notice.